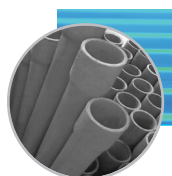


# TUBERIA INDUSTRIAL PVC Y CPVC SCH 80



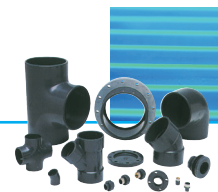
## TUBERIA INDUSTRIAL PVC Y CPVC SCH-80

Fabricada según Norma ASTM 1785

DIAMETRO		PVC SCH80		CPVC SCH80	
Diámetro Pulgadas	OD (")	Espesor Mínimo (")	Peso Kg/m	Espesor Mínimo (")	Peso Kg/m
1/2	0,840	0,147	0,317	0,147	0,354
3/4	1,050	0,154	0,430	0,154	0,479
1	1,315	0,179	0,631	0,179	0,704
1 1/4	1,660	0,191	0,872	0,191	0,973
1 1/2	1,900	0,200	1,058	0,200	1,180
2	2,375	0,218	1,464	0,218	1,632
2 1/2	2,875	0,276	2,232	0,276	2,491
3	3,500	0,300	2,991	0,300	3,336
3 1/2	4,000	0,318	3,649	0,318	4,070
4	4,500	0,337	4,439	0,337	4,876
5	5,563	0,375	6,068	0,375	6,068
6	6,625	0,432	8,348	0,432	9,312
8	8,625	0,500	12,681	0,500	14,145
10	10,750	0,593	18,801	0,593	20,973
12	12,750	0,687	25,867	0,687	28,855
14	14,000	0,750	31,028	0,750	34,612
16	16,000	0,843	39,893	0,843	44,478
18	18,000	0,937	49,913	0,937	52,703
20	20,000	1,031	61,078	1,031	68,268
24	24,000	1,218	86,651	1,281	96,659

## FITTINGS DE CPVC Y PVC SCH-80

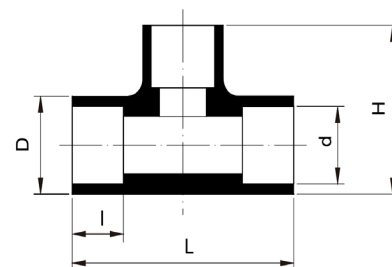
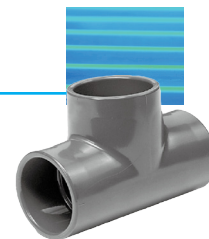
- Tee
- Codo
- Copla
- Copla Reducción
- Curva
- Brida
- Tapa Gorro
- Pegamentos y Lubricantes
- Unión Americana
- Diámetro en stock CPVC Sch-80 1/2" a 4"
- Diámetro en stock PVC Sch-80 1/2" a 10"



## TEE 90° PVC Y CPVC SCH 80

Socket

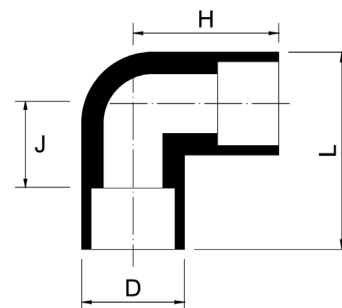
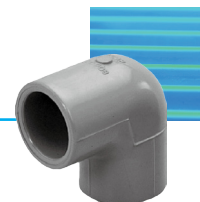
Diámetro Nominal Pulgadas	D	d	H	I	L
1/2"	1-3/16"	27/32"	2-1/16"	7/8"	2-31/32"
3/4"	1-7/16"	1-1/16"	2-7/16"	31/32"	3-7/16"
1"	1-11/16"	1-15/16"	2-27/32"	1-1/8"	4-1/32"
1-1/4"	2-1/16"	1-21/32"	3-5/32"	1-1/4"	4-1/4"
1-1/2"	2-11/32"	1-29/32"	3-3/4"	1-13/32"	5-5/32"
2"	2-7/8"	2-13/32"	4-9/32"	1-17/32"	5-11/16"
2-1/2"	3-15/32"	2-29/32"	5-1/4"	1-3/4"	7-1/32"
3"	4-5/32"	3-17/32"	6-1/32"	1-29/32"	7-15/16"
4"	5-1/4"	4-1/2"	7-11/32"	2-1/4"	9-15/32"
5"	7-9/16"	5-1/4"	10-19/32"	2-31/32"	13-19/32"
6"	7-9/16"	6-21/32"	10-19/32"	2-31/32"	13-19/32"
8"	9-21/32"	8-21/32"	13-21/32"	3-31/32"	17-21/32"
10"	12-17/32"	10-7/8"	17-25/32"	5-17/32"	23-1/32"
12"	14-9/16"	12-13/16"	20-19/32"	6-5/16"	26-7/16"
14"	15-5/8"	14-1/32"	22-3/8"	7"	29-2/32"
16"	17-23/32"	16-1/32"	25-29/32"	8-1/32"	34-3/32"
18"	19-7/8"	18-1/32"	29-1/4"	8-31/32"	38-19/32"
20"	22-5/32"	20-1/32"	31-3/16"	10"	40-1/4"
24"	26-17/32"	24-3/32"	37-13/32"	12"	48-1/4"



## CODO 90° PVC Y CPVC SCH 80

Socket

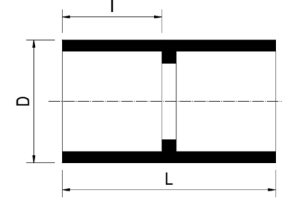
Diámetro Nominal Pulgadas	D	J	H	L
1/2"	1-3/16"	19/32"	1-15/32"	2-1/16"
3/4"	1-7/16"	21/32"	1-21/32"	2-3/8"
1"	1-21/32"	27/32"	1-31/32"	2-3/4"
1-1/4"	2-3/32"	1-3/32"	2-11/32"	3-3/8"
1-1/2"	2-3/8"	1-9/32"	2-21/32"	3-3/4"
2"	2-7/8"	1-17/32"	3-1/32"	4-5/16"
2-1/2"	3-15/32"	1-3/4"	3-1/2"	5-1/8"
3"	4-5/32"	2-1/8"	3-31/32"	6-1/16"
4"	5-1/4"	2-19/32"	4-27/32"	7-15/32"
5"	7-19/32"	4-1/16"	6-11/16"	10-1/2"
6"	7-19/32"	3-3/4"	6-11/16"	10-1/2"
8"	9-21/32"	4-27/32"	8-25/32"	13-5/8"
10"	12-7/16"	5-25/32"	11-11/32"	17-9/16"
12"	15-5/8"	7-3/32"	13-13/32"	20-11/16"
14"	15-19/32"	7-15/32"	14-17/32"	22-11/32"
16"	17-11/16"	9-11/32"	17-1/16"	25-29/32"
18"	19-7/8"	10-5/16"	19-5/16"	29-1/4"
20"	22-5/32"	10-3/32"	20-1/8"	31-3/16"
24"	26-17/32"	12-3/32"	24-5/16"	38-21/32"



## COPLA PVC Y CPVC SCH 80

Socket

Diámetro Nominal Pulgadas	D	I	L
1/2"	1-9/32"	29/32"	1-15/16"
3/4"	1-15/32"	1"	2-3/16"
1"	1-3/4"	1-1/8"	2-1/2"
1-1/4"	2-3/16"	1-1/4"	2-23/32"
1-1/2"	2-1/2"	1-3/8"	2-31/32"
2"	2-31/32"	1-1/2"	3-5/16"
2-1/2"	3-9/16"	1-25/32"	3-27/32"
3"	4-1/4"	1-7/8"	3-31/32"
4"	5-5/16"	2-1/4"	4-25/32"
5"	6-3/8"	2-21/32"	5-17/32"
6"	7-5/8"	2-31/32"	6-7/32"
8"	9-11/16"	3-15/16"	8-1/2"
10"	12-15/32"	5-1/32"	10-9/16"
12"	14-3/8"	6-1/32"	12-13/32"
14"	15-1/2"	7"	16"
16"	17-23/32"	8"	17-5/16"
18"	19-7/8"	9"	19-17/32"
20"	22-3/16"	10"	21-17/32"
24"	26-17/32"	12"	25-23/32"



## FLANGE VAN STONE PVC CPVC SCH 80

2 piezas, Disco Volante

Pulgadas					
1/2"	1-1/32"	2-3/8"	3-1/2"	1"	1/2"
3/4"	1-7/18"	2-3/4"	3-7/8"	1-1/8"	17/32"
1"	1-3/4"	3-1/8"	4-1/4"	1-9/32"	21/32"
1 1/4"	2-3/32"	3-1/2"	4-5/8"	1-13/32"	21/32"
1 1/2"	2-3/8"	3-7/8"	4-31/32"	1-1/2"	23/32"
2"	2-7/8"	4-3/4"	6"	1-21/32"	3/4"
2 1/2"	3-19/32"	5-1/2"	6-31/32"	1-21/32"	15/16"
3"	4-7/32"	6"	7-1/2"	2-1/2"	1"
4"	5-1/4"	7-1/2"	9"	2-1/2"	13/32"
6"	7-9/16"	9-1/2"	11-3/18"	3-9/32"	1-1/4"
8"	9-3/8"	11-3/4"	13-1/2"	4-5/8"	1-13/32"
10"	11-3/4"	14-1/4"	16"	5-29/32"	1-21/32"
12"	13-11/16"	17"	18-15/18"	7-17/32"	1-21/32"
14"	14-9/16"	18-3/4"	20-31/32"	---	1-1/8"
16"	16-9/16"	21-1/4"	23-1/2"	---	1-1/8"
18"	18-1/2"	22-9/16"	25"	---	1-1/8"
20"	20-1/2"	25"	27-1/2"	---	1-1/8"
24"	24-13/16"	29-1/2"	32"	---	1-1/8"

